



5-0 IGNITE IGNITION COIL KIT INSTALLATION MANUAL

This installation manual is applicable to the following vehicle make and models;

- Mitsubishi Lancer Evolution 4 to 9 – SKU# 50IGN4G63R35

Engine: 4G63 (Non Mivec) and 4G63 (Mivec)

Please read this installation manual carefully prior to installing the product.



LIABILITY DISCLAIMER

Products sold by 5-0 Ignite may not meet the public road vehicle legal requirements of your country/state/territory, therefore, all products are designed/sold for racing and off-street use only.

Under no circumstances shall 5-0 Ignite, nor any of its officers, directors and employees, be liable for any incidental or consequential damage to property or equipment, loss of property or equipment, loss of profit or revenue and injury or death by either direct or indirect relation to any vehicles, components and person(s) as a result of sale, use or installation of any products supplied by 5-0 Ignite. 5-0 Ignite will not be held responsible for any labour costs to fit or remove of any the product(s) supplied with or without relation to warranty.

5-0 Ignite will only respond to queries with its direct customers that have purchased the product(s) in regard to all matters unless otherwise agreed, such as involving 3rd party queries in such situations where technical assistance is required. All ECU-related settings must be addressed to your tuner or ECU manufacturer representative/ technical support.

If in doubt, seek professional help.

For further information, visit www.50ignite.com/terms-and-conditions/

PREFACE

Thank you for purchasing 5-0 ignite ignition coil kit. We have done all the hard work to ensure that your installation is a breeze and clean. Your kit should include the following items;

- 1x Pre-made plug and play ignition coil harness
- 4x Hitachi R35 ignition coils with sealing boss attached to the stalk
- 1x Mounting system
- 4x M6x1 – 16mm long hex head flange bolt for the mounting system
- 4x Round washers for the mounting system
- 1x M6 Nyloc nut to secure the relay

Installation time is typically 10 mins, depending on your engine setup, requiring basic set of mechanical skills and hand tools;

- Ratchet wrench
- Drive extension
- 10mm hex socket
- 12mm hex ring end spanner



INFORMATION AND LIMITATIONS

- **Spark plugs to use (as per OEM)**
 - Non-Mivec - NGK BR#EIX series (13/16" hex size)
 - Mivec – NGK LFR#AIX (5/8" hex size, longer thread reach)

denotes your suitable heat range.
- Although the kit can be run with OEM ECU, aftermarket ECU is highly desirable which allows you to set ignition dwell time table to maximise the coil's performance.
- Typical ignition dwell time setting is 4.3ms @ 14V. Your tuner will determine the appropriate dwell times across the remaining voltage and RPM axis range.
- Any part of the ignition loom must be sufficiently protected or moved away from close proximity of any exhaust components.

PROCEDURE

1. Disconnect/remove existing;
 - a. Battery
 - b. Coil valley cover
 - c. Ignition coils
2. Pre-install your R35 coils onto the mounting plate, leave cylinder 4 coil hand tightened.
3. Insert the assembly to the engine.
4. Install the supplied M6 bolts (with washers underneath) to fasten the mounting plate to the valve cover. **Start from the bolt hole closest to the timing belt and work across to the gearbox side (coil number 4 has to be removed for access to the last hole as indicated).**

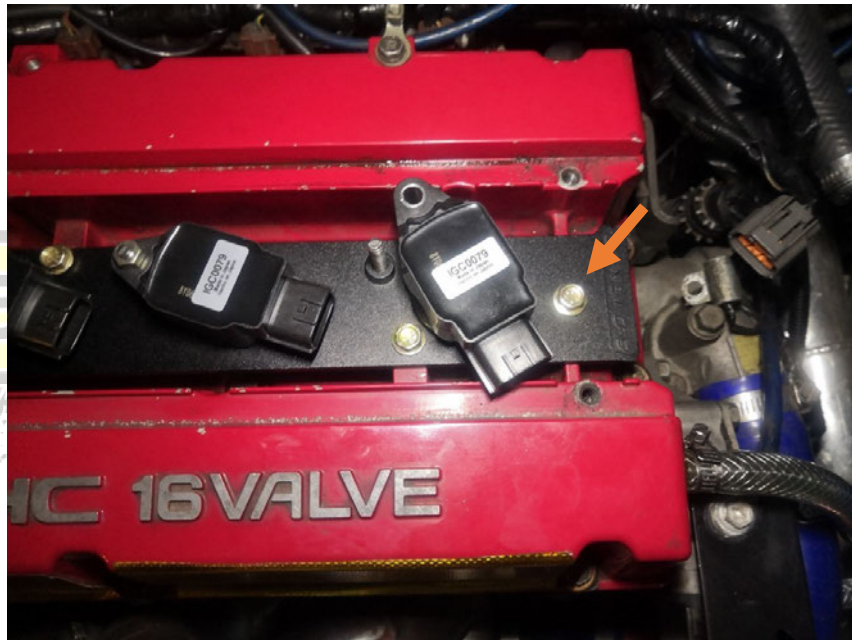


Figure 1 – Fastening the Mounting Plate to The Valve Cover

5. Reposition and tighten 4th cylinder coil. Connect the supplied harness as pictured, tuck the main connector onto the provided slot on the mounting plate. Remove the connector bracket as shown.



Figure 2 – Tucking the Connector and Removing Bracket

6. Route the individual coil wiring as shown.



Figure 3 – Routing the Harness

7. Remove the indicated bolt and attach the ground ring from the harness.

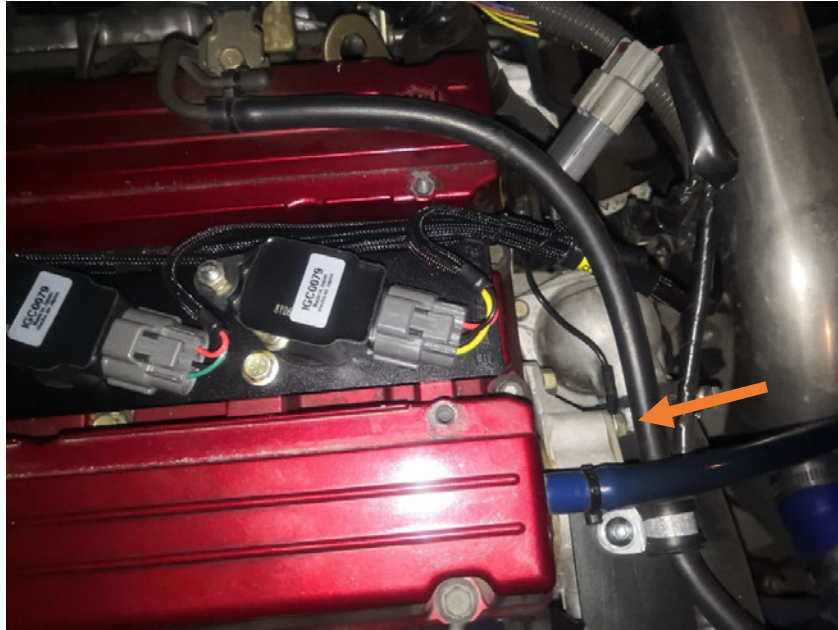


Figure 4 – Attaching the Ground Terminal

8. Mount the relay to the battery holder post.
9. Connect the relay positive ring terminal to the battery post.



Figure 5 – Mounting the Relay and Connecting the Positive Power Source

10. Install the coil valley cover back on.

CONCLUSION

Installation is now complete. Re-check all steps in the procedure, if all good, re-connect battery and start the engine. It is also recommended to check or replace your spark plugs on this installation. The R35 coil dwell time can be found in our website under 'installation manual'.

Replacement sealing tube O-rings: BS211 Duro 70

